



856 IV Wheel Loader



Engine	Cummins
Gross Power	164 kW (220 hp) @ 2,200 rpm
Net Power	154 kW (207 hp) @ 2,200 rpm
Operating Weight	18,200 kg
Standard Bucket Size	3.3 m ³
Standard Breakout Force	164 kN
Standard Dump Clearance	3,101 mm

856 IV Wheel Loader



ENGINE

Emission Regulation	Tier 4 interim / Stage IIIB
Make	Cummins
Gross Power	164 kW (220 hp) @ 2,200 rpm
Net Power	154 kW (207 hp) @ 2,200 rpm
Peak Torque	949 N·m @ 1,500 rpm
Displacement	6.7 L
Number of Cylinders	6
Aspiration	Turbo air - to - air aftercooled

TRANSMISSION

Transmission Type	countershaft power shift
Torque Converter	single-stage, three-element
Maximum Travel Speed, fwd	38.5 km/h
Maximum Travel Speed, rev	23.6 km/h
Number of Speeds, fwd	4
Number of Speeds, rev	3

AXLES

Differential Front Type	limited slip
Differential Rear Type	limited slip
Axle Oscillation	±12°

STEERING

Steering Configuration	articulated
Steering Relief Pressure	17.2 MPa

BRAKES

Service Brake Type	wet multi disc
Service Brake Actuation	hydraulic
Parking Brake Type	auto and manual electronic controlled
Parking Brake Actuation	spring apply; hydraulic release

HYDRAULIC SYSTEM

Main Pump Type	vane
Main Relief Pressure	20 MPa
Raise	6.5 s
Dump Time	1.5 s
Float Down Time	3.5 s
Fastest Total Cycle Time	11.5 s

LOADER ARM PERFORMANCE

Tipping Load - Straight	14,082 kg
Tipping Load- Full Turn	12,347 kg
Bucket Breakout Force	164 kN
Maximum Dump Angle at Full Height	45°
Dump Clearance at Full Height Discharge	3,101 mm
Dump Reach at Full Height Discharge	1,047 mm
Maximum Hinge Pin Height	4,150 mm
Maximum Digging Depth, Bucket Level	64 mm
Bucket Rollback at Ground Level	45°
Bucket Rollback at Carry	49°
Bucket Rollback at Maximum Height	58°

BUCKET PERFORMANCE

Reference Bucket	3.3 m ³
------------------	--------------------

DIMENSIONS

Length with Bucket Down	8,280 mm
Width Over Tires	2,751 mm
Wheelbase	3,250 mm
Wheel Tread	2,150 mm
Ground Clearance	428 mm
Turn Angle, Either Side	40°
Rear Angle of Departure	25°
Turning Radius, Outside of Tire	6,393 mm
Turning Radius, Center of Tire	6,094 mm
Turning Radius, Bucket Carry	6,780 mm

TIRES

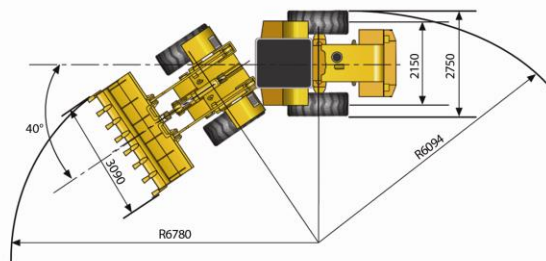
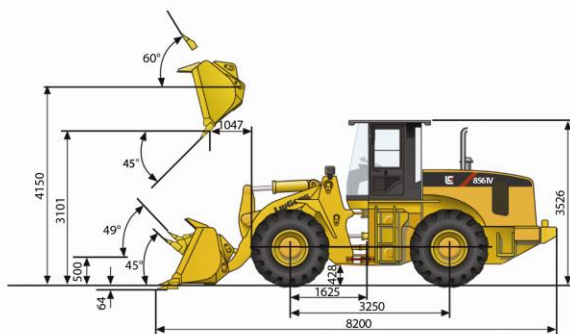
Tire Size	23.5 R 25
-----------	-----------

OPERATING WEIGHTS

Operating Weight	18,200 kg
------------------	-----------

SERVICE CAPACITIES

Fuel Tank	370 L
Engine Oil	17 L
Cooling System	71 L
Hydraulic Reservoir	245 L
Transmission and Torque Converter	45 L
Axles, each	34 L



Guangxi Liugong Machinery Co., Ltd.

No. 1 Liutai Road, Liuzhou, Guangxi 545007, PR China

T: +86 772 388 6124 E: overseas@liugong.com

www.liugong.com

09/2012 Designed by LiuGong

Specifications and designs are subject to change without notice. Machines shown may include optional equipment.